



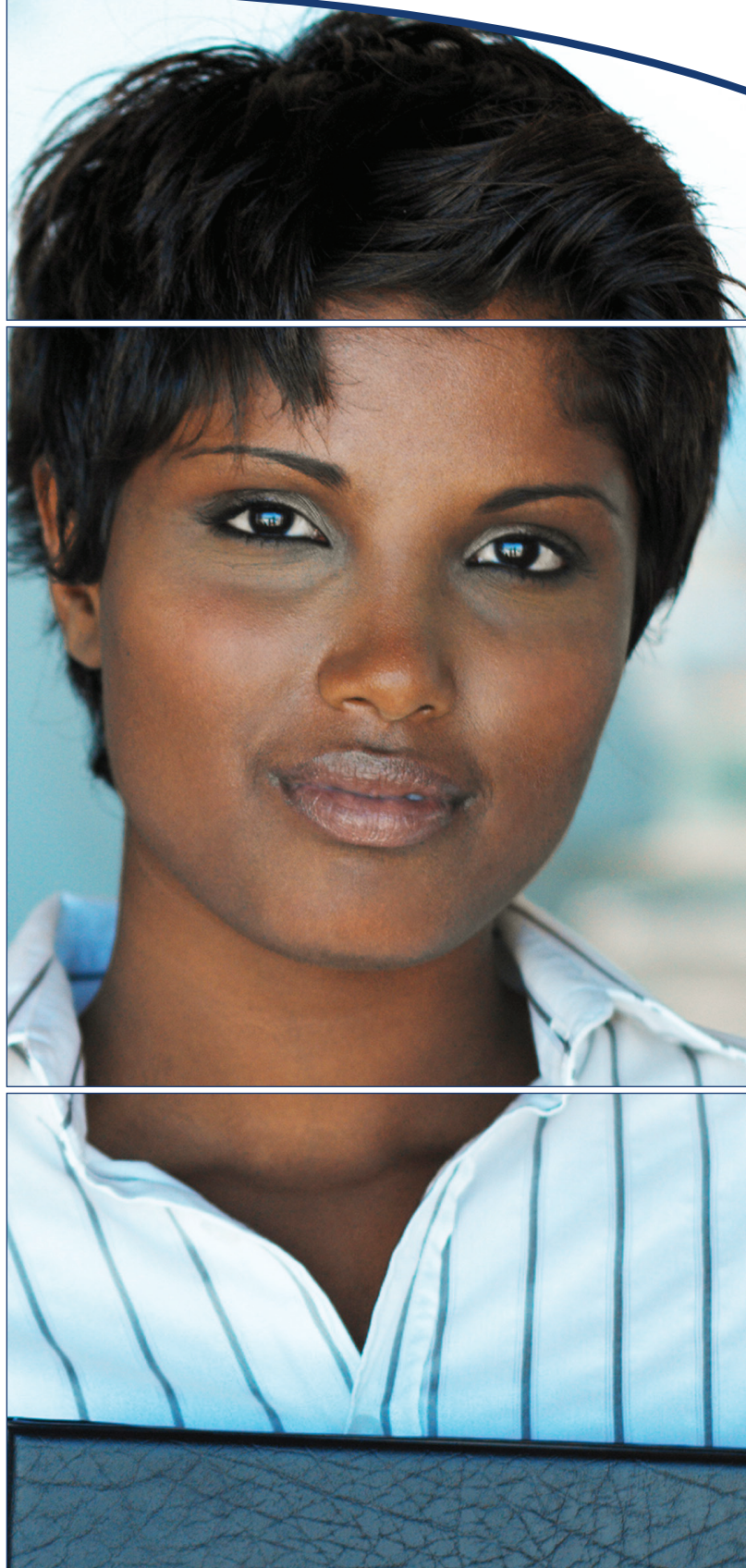
**TOEIC®**

*Listening. Learning. Leading.*

**A Redesigned TOEIC® Test  
for the Global Workplace**

---

**Arriving in January, 2007**



*The TOEIC® Test –  
Know English. Know Success.*

# The TOEIC® Test — the Standard for Workplace English — has been Redesigned

For more than 25 years, businesses, government agencies, educational institutions and English language learning programs around the world have relied on the *Test of English for International Communication*™ (TOEIC®) to evaluate the English proficiency of nonnative English-speaking people. With more than 4.5 million test takers per year, the TOEIC test is the global standard for assessing workplace English-language proficiency.

Now, in keeping with our policy of continually reevaluating and improving our tests, ETS has made some significant enhancements to the TOEIC test, designed to address the real demands of workplace communicative English. The new TOEIC® Listening and Reading Test will be administered for the first time in the U.S. and Canada in January 2007. Here's what you can expect.

## What's new about the new TOEIC test?

### An authentic measure of real business English

The newly redesigned TOEIC test reflects typical language activities people encounter in today's workplace. Consistent with current business communication styles around the world, it emphasizes authentic language contexts which require learners to use multiple strategies and abilities to comprehend and connect information. While we didn't change all tasks in the test, those we did have essentially been refined to more closely resemble what a person using the language in the real world would have to do.

### Other notable enhancements include:

#### Listening section

- Fewer photograph questions in Part 1
- Recorded as well as written questions in Part 3 (conversations) and Part 4 (short talks)
- Shift from individual questions to sets of questions in Part 3 (conversations)
- Broader range of accents, representing how English is spoken in the United States, Great Britain, Canada and Australia

#### Reading section

- Replacement of error-recognition questions with text-completion questions in Part 6
- Inclusion of questions based on two interrelated passages in Part 7

We've even given our score reports a fresh new look.

### Sample Score Report

ETS® TOEIC® LISTENING AND READING TEST OFFICIAL SCORE REPORT		
Name: _____ Date of Birth: _____ Identification Number: _____ Client/Test Center: _____ Test Date: _____	LISTENING	TOTAL SCORE
	READING	
		Report is valid for two years from the test administration date.



## What stays the same?

Along with many of the question types, the core characteristics of the test remain unchanged:

**Test time:** 2 hours (Listening: 45 minutes, Reading: 75 minutes)

**Range of difficulty**

**Number of questions:** 200 (Listening: 100, Reading: 100)

**Score range and scale**

**Paper-and-pencil administration**

And most importantly, the one thing that will never change is our commitment to maintaining the quality, fairness, reliability and validity that have made the TOEIC test the global standard in workplace English assessment. This means you can still rely on TOEIC test scores to guide your most important decisions and help give your organization a competitive edge.

## At a Glance

### A side-by-side comparison of the current and new TOEIC tests

Current TOEIC Test	New TOEIC Test
<b>Section 1 – Listening Comprehension</b>	<b>Section 1 – Listening Comprehension</b>
<b>Part 1:</b> Photographs: 20 questions	<b>Part 1:</b> Photographs: 10 questions
<b>Part 2:</b> Question – Response: 30 questions	<b>Part 2:</b> Question – Response: 30 questions
<b>Part 3:</b> Short conversation: 30 questions	<b>Part 3:</b> Short conversation: 30 questions (10 conversations, 3 questions each)
<b>Part 4:</b> Short talks: 20 questions	<b>Part 4:</b> Short talks: 30 questions (10 short talks, 3 questions each)
<b>Section 2 – Reading Comprehension</b>	<b>Section 2 – Reading Comprehension</b>
<b>Part 5:</b> Incomplete sentences: 40 questions	<b>Part 5:</b> Incomplete sentences: 40 questions
<b>Part 6:</b> Error recognition: 20 questions	<b>Part 6:</b> Replaced with text completion: 12 questions (4 reading sets, 3 questions each)
<b>Part 7:</b> Reading comprehension: 40 questions	<b>Part 7:</b> Reading comprehension: 48 total questions <b>Single Passages:</b> 28 questions <b>Double Passages:</b> 20 questions

## Find out more

If you have any questions or would like additional information about the new TOEIC Listening and Reading Test, contact the TOEIC Testing Program:

**US: 1-609-771-7170**

**Canada: 011+1-613-542-3368 or 1-800-615-8666**

**E-mail: [TOEIC@ets.org](mailto:TOEIC@ets.org)**

**Web: [www.ets.org/TOEIC](http://www.ets.org/TOEIC)**





## Test Dates for 2007

In the United States and Canada

---

January 13	May 12	September 15
February 10	June 9	October 13
March 10	July 14	November 10
April 14	August 18	



*Listening. Learning. Leading.*

[www.ets.org](http://www.ets.org)



Copyright © 2006 by Educational Testing Service. All rights reserved. ETS, the ETS logo and TOEIC are registered trademarks of Educational Testing Service (ETS) in the United States of America and other countries throughout the world. TEST OF ENGLISH FOR INTERNATIONAL COMMUNICATION is a trademark of ETS. 3123